

- NOTES**
- SITE LAYOUT AND DESIGNS INDICATIVE ONLY AND SUBJECT TO CHANGE DURING DETAILED DESIGN DEVELOPMENT.
  - REFER TO DRAWING 2010673.415 FOR FULL SET OF PROJECT NOTES

- LEGEND**
- NH2 WATERMAIN AND CHAINAGE
  - PROPOSED DESIGNATION BOUNDARY
  - PERMANENT ACCESSWAY
  - LV LINE VALVE
  - AV AIR VALVE
  - SV SCOUR VALVE

EXISTING FEATURES:  
REFER DWG 2010673.415

**FOR CONSENT**

ISSUE	DATE	AMENDMENT	BY	APPD.
2	22.02.16	ISSUED FOR CONSENT - UPDATED WITH WSL COMMENTS	W.O.	M.A.E.
1	03.12.15	ISSUED FOR CONSENT	W.O.	M.A.E.

DESIGNED	N.H.	12.15
DES. CHECKED	M.A.E.	12.15
DRAWN	W.O.	12.15
DWG. CHECKED	N.H.	12.15
PROJECT LEADER	M.A.E.	12.15
INFRASTR APP'D		

OPERATIONS
INFRASTRUCTURE

**Watercare**

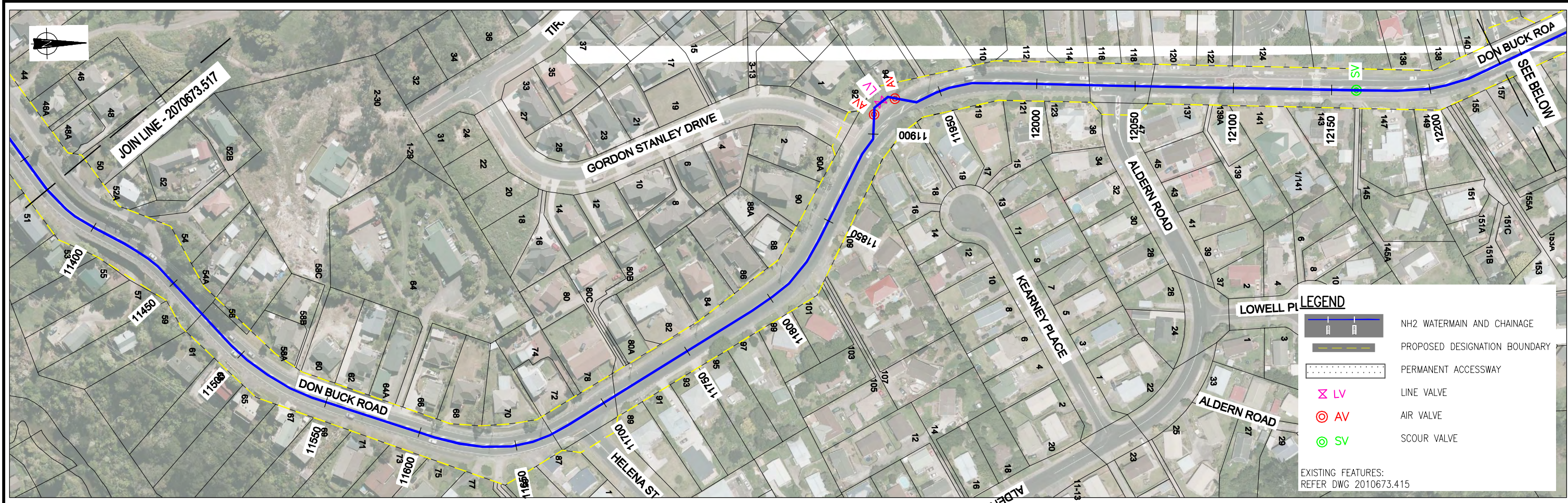
COPYRIGHT - This drawing, the design concept, remain the exclusive property of Watercare Services Limited and may not be used without approval. Copyright reserved.

**NORTH HARBOUR No.2 WATERMAIN  
GENERAL  
ROUTE PLAN**

CAD FILE	2010673.517-520	DATE	22.02.16
ORIGINAL SCALE	A3 1:2,000	CONTRACT No.	5663
REF No.	WMNH2-91-G-517	ISSUE	-
DWG No.	2010673.517		2

Plot Date: Mar 04, 2016 - 9:20am U:\naoh\2070673\001\DWG\_Current\Map\AEE\Main Route AEE Drawing Set\ 2010673.517-520.dwg





- NOTES**
- SITE LAYOUT AND DESIGNS INDICATIVE ONLY AND SUBJECT TO CHANGE DURING DETAILED DESIGN DEVELOPMENT.
  - REFER TO DRAWING 2010673.415 FOR FULL SET OF PROJECT NOTES

**FOR CONSENT**

ISSUE	DATE	AMENDMENT	BY	APPD.
2	22.02.16	ISSUED FOR CONSENT - UPDATED WITH WSL COMMENTS	W.O.	M.A.E.
1	03.12.15	ISSUED FOR CONSENT	W.O.	M.A.E.

DESIGNED	N.H.	12.15
DES. CHECKED	M.A.E.	12.15
DRAWN	W.O.	12.15
DWG. CHECKED	N.H.	12.15
PROJECT LEADER	M.A.E.	12.15
INFRASTR APP'D		

OPERATIONS
INFRASTRUCTURE

**Watercare**

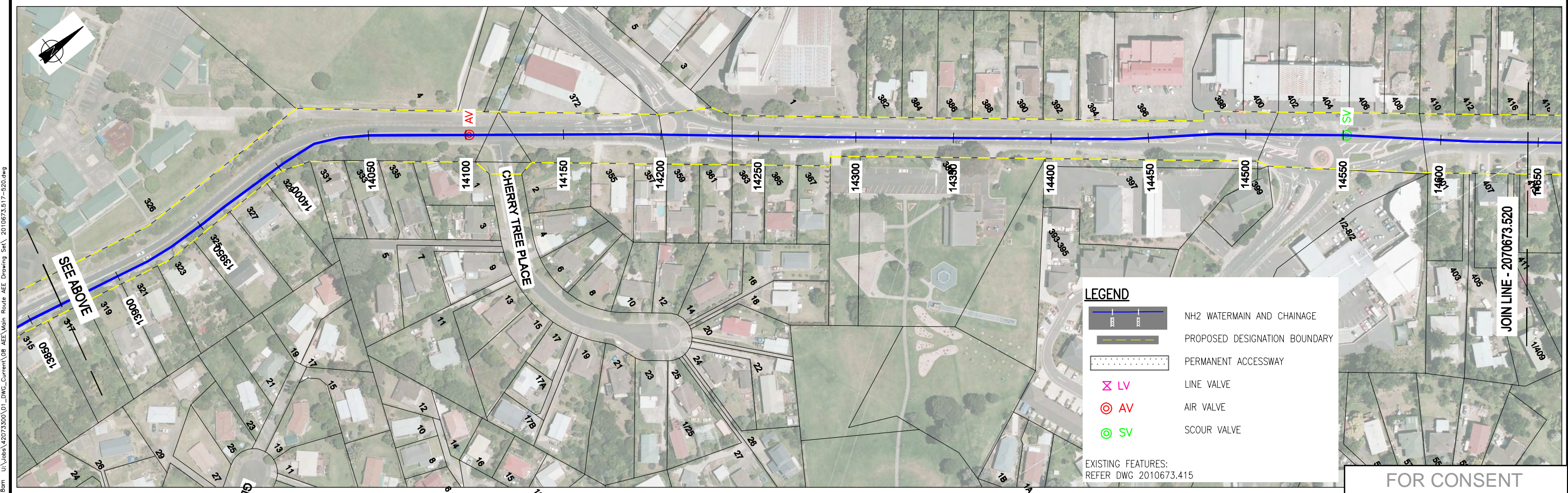
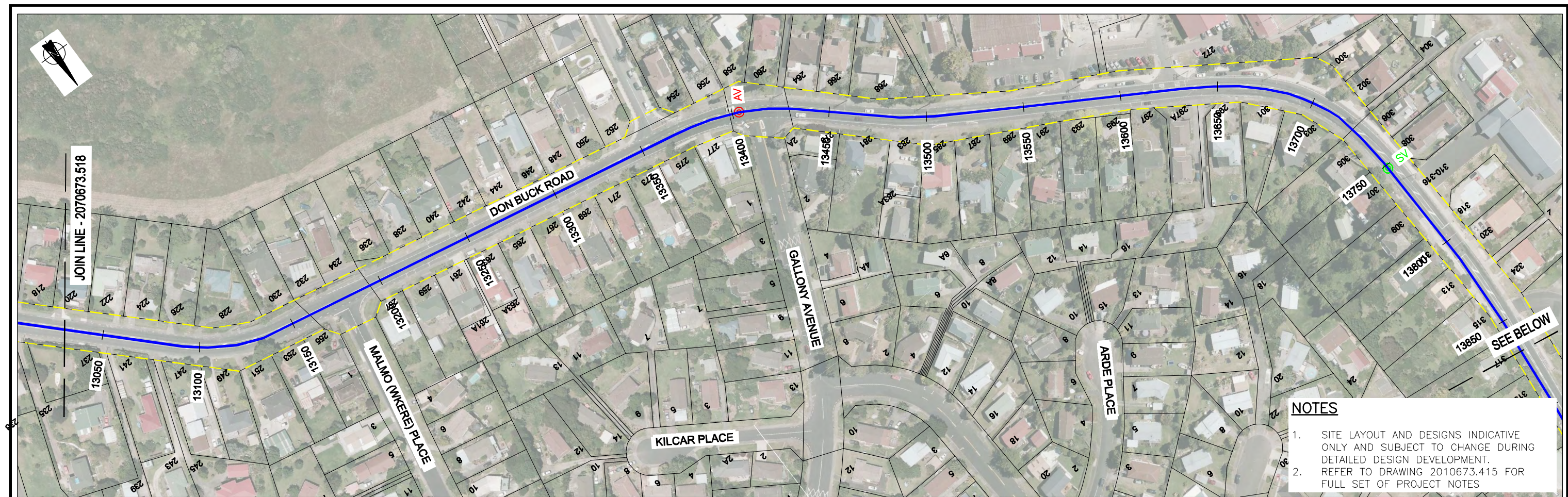
COPYRIGHT - This drawing, the design concept, remain the exclusive property of Watercare Services Limited and may not be used without approval. Copyright reserved.

**NORTH HARBOUR No.2 WATERMAIN  
GENERAL  
ROUTE PLAN**

CAD FILE	2010673.517-520	DATE	22.02.16
ORIGINAL SCALE	A3 1:2,000	CONTRACT No.	5663
REF No.	WMNH2-91-G-518	ISSUE	-
DWG No.	2010673.518		2

Plot Date: Mar 04, 2016 - 9:19am U:\naeh\2010673.517-520\DWG\_Current\08\_AEE\Main Route\_AEE\_Drawing Set\2010673.517-520.dwg





FOR CONSENT

ISSUE	DATE	AMENDMENT	BY	APPD.
2	22.02.16	ISSUED FOR CONSENT - UPDATED WITH WSL COMMENTS	W.O.	M.A.E.
1	03.12.15	ISSUED FOR CONSENT	W.O.	M.A.E.

DESIGNED	N.H.	12.15
DES. CHECKED	M.A.E.	12.15
DRAWN	W.O.	12.15
DWG. CHECKED	N.H.	12.15
PROJECT LEADER	M.A.E.	12.15
INFRAS'T'R APP'D		

**Watercare**

**NORTH HARBOUR No.2 WATERMAIN**

**GENERAL**

**ROUTE PLAN**







COPYRIGHT - This drawing, the design concept, remain the exclusive property of Watercare Services Limited and may not be used without approval. Copyright reserved.

CAD FILE	2010673.517-520	DATE	22.02.16
ORIGINAL SCALE	A3	CONTRACT No.	5663
REF No.	WMNH2-91-G-519	ISSUE	-
DWG No.	2010673.519		2

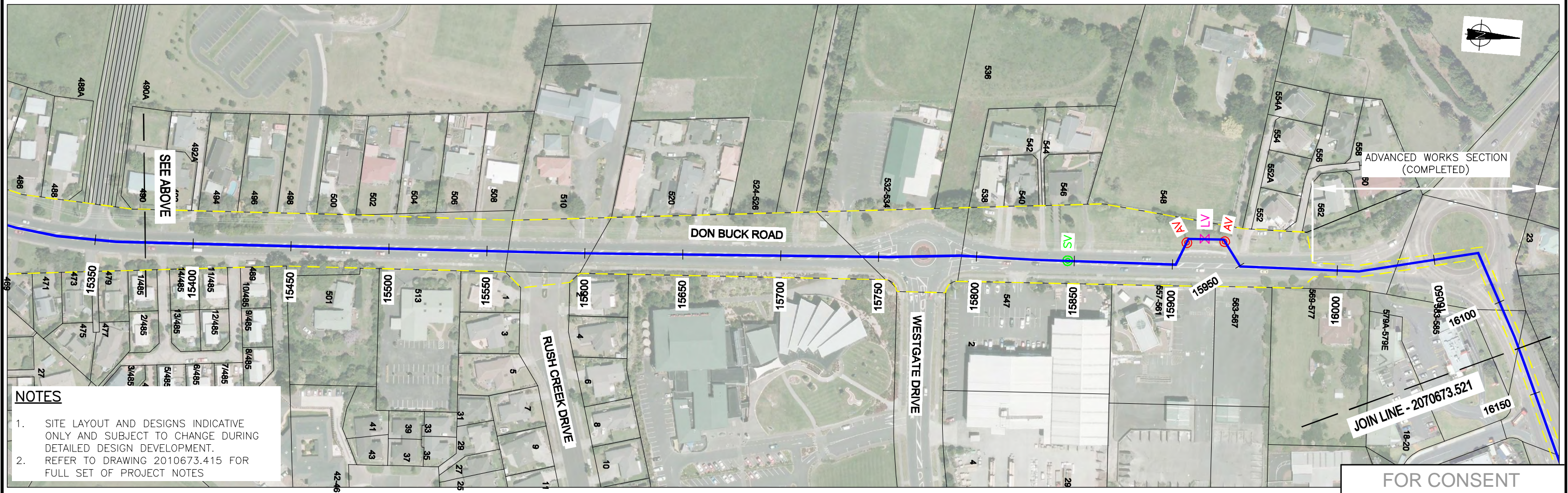
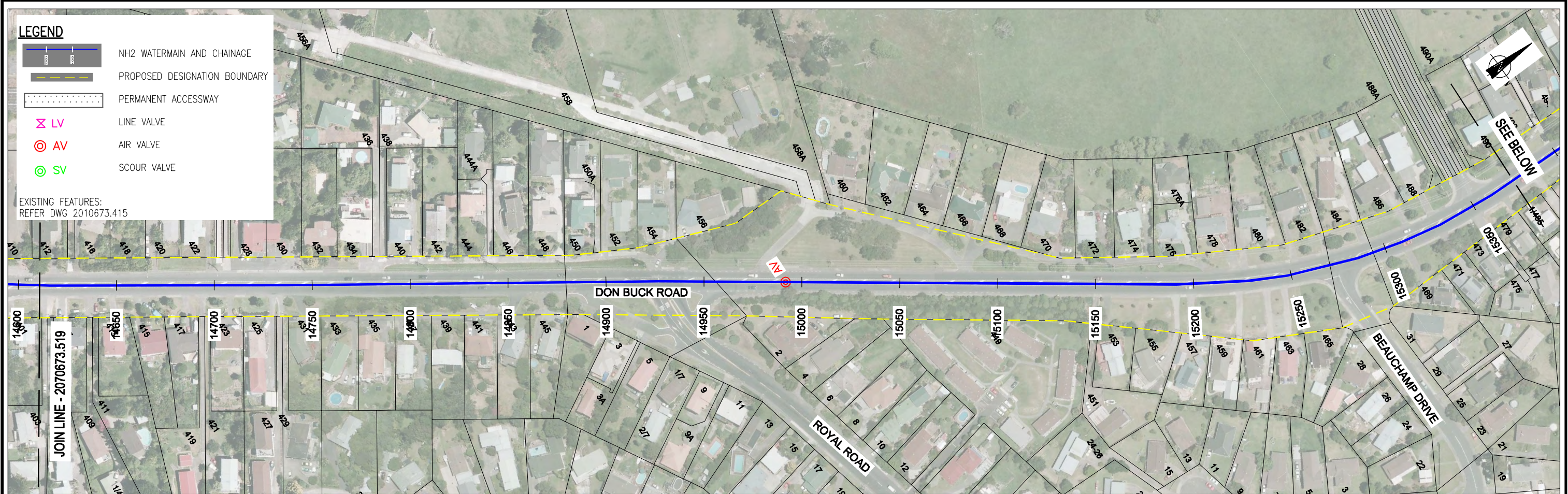
Plot Date: Mar 04, 2016 - 9:18am U:\naaa\2073500\01\_DWG\_Current\08\_AEE\Main Route\_AEE\_Drawing Set\ 2010673.517-520.dwg



**LEGEND**

-  NH2 WATERMAIN AND CHAINAGE
-  PROPOSED DESIGNATION BOUNDARY
-  PERMANENT ACCESSWAY
-  LV LINE VALVE
-  AV AIR VALVE
-  SV SCOUR VALVE

EXISTING FEATURES:  
REFER DWG 2010673.415



**NOTES**

1. SITE LAYOUT AND DESIGNS INDICATIVE ONLY AND SUBJECT TO CHANGE DURING DETAILED DESIGN DEVELOPMENT.
2. REFER TO DRAWING 2010673.415 FOR FULL SET OF PROJECT NOTES

FOR CONSENT

ISSUE	DATE	AMENDMENT	BY	APPD.
2	22.02.16	ISSUED FOR CONSENT - UPDATED WITH WSL COMMENTS	W.O.	M.A.E.
1	03.12.15	ISSUED FOR CONSENT	W.O.	M.A.E.

DESIGNED	N.H.	12.15
DES. CHECKED	M.A.E.	12.15
DRAWN	W.O.	12.15
DWG. CHECKED	N.H.	12.15
PROJECT LEADER	M.A.E.	12.15
INFRASTR APP'D		

OPERATIONS	
INFRASTRUCTURE	

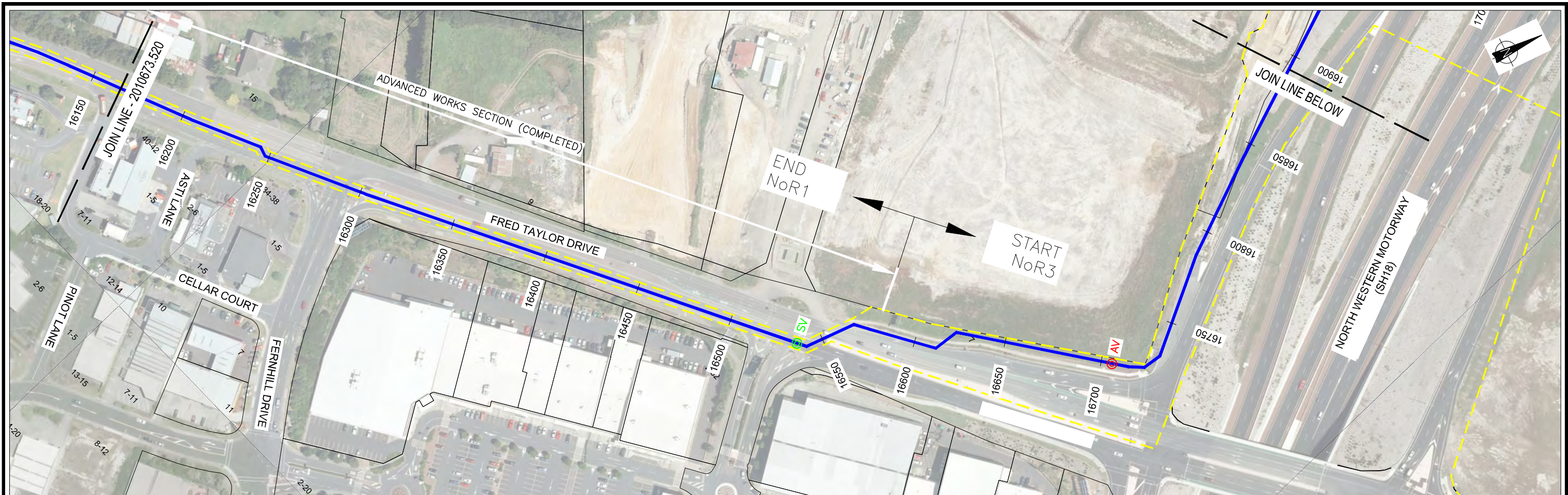


**Watercare**  
COPYRIGHT - This drawing, the design concept, remain the exclusive property of Watercare Services Limited and may not be used without approval. Copyright reserved.

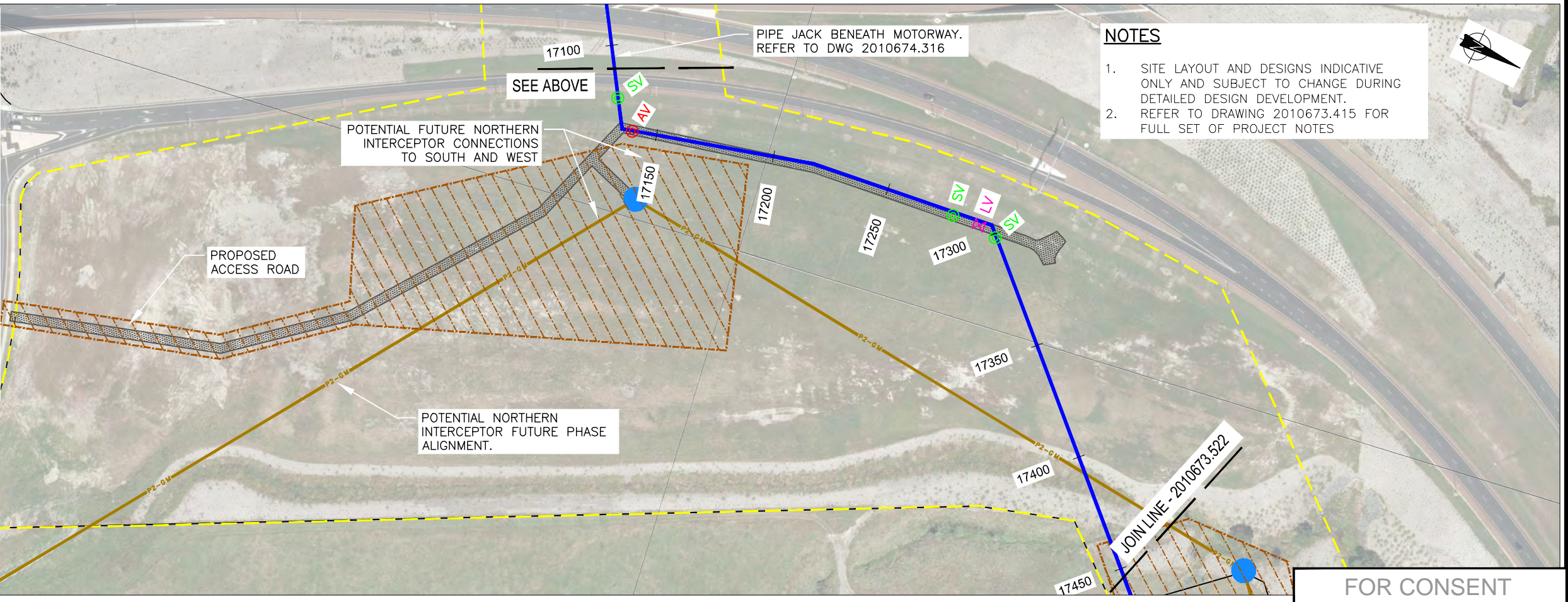
**NORTH HARBOUR No.2 WATERMAIN  
GENERAL  
ROUTE PLAN**

CAD FILE	2010673.517-520	DATE	22.02.16
ORIGINAL SCALE	A3	CONTRACT No.	5663
REF No.	WMNH2-91-G-520	ISSUE	-
DWG No.	2010673.520		2





- PROPOSED SERVICES**
- NH2 WATERMAIN AND CHAINAGE
  - PROPOSED DESIGNATION BOUNDARY
  - PERMANENT ACCESSWAY
  - LV LINE VALVE
  - AV AIR VALVE
  - SV SCOUR VALVE
  - CATHODIC PROTECTION
  - INDICATIVE NI SURFACE CONSTRUCTION AREA AND/OR ACCESS
  - INDICATIVE NI SHAFT LOCATION
  - NI PHASE 1
  - NI FUTURE PHASES
- EXISTING FEATURES:**  
REFER DWG 2010673.415



- NOTES**
1. SITE LAYOUT AND DESIGNS INDICATIVE ONLY AND SUBJECT TO CHANGE DURING DETAILED DESIGN DEVELOPMENT.
  2. REFER TO DRAWING 2010673.415 FOR FULL SET OF PROJECT NOTES

FOR CONSENT

ISSUE	DATE	AMENDMENT	BY	APPD.
2	22.02.16	ISSUED FOR CONSENT - UPDATED WITH WSL COMMENTS	W.O.	M.A.E.
1	03.12.15	ISSUED FOR CONSENT	W.O.	M.A.E.

DESIGNED	N.H.	12.15
DES. CHECKED	M.A.E.	12.15
DRAWN	W.O.	12.15
DWG. CHECKED	N.H.	12.15
PROJECT LEADER	M.A.E.	12.15
INFRASTR APP'D		

OPERATIONS

**Watercare**

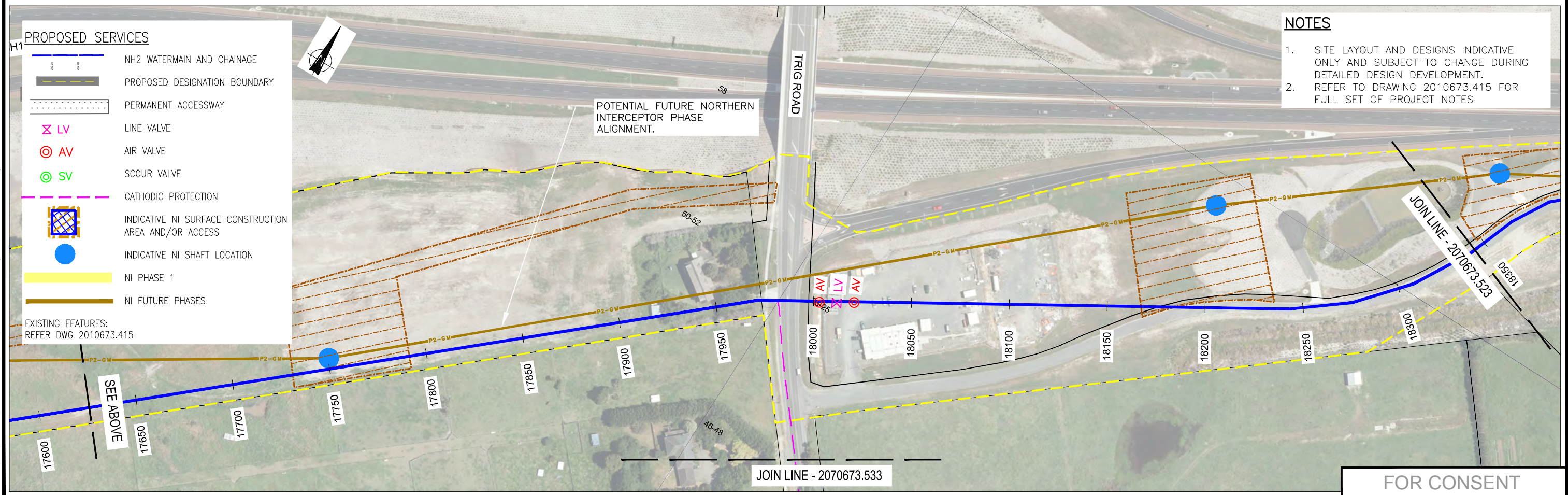
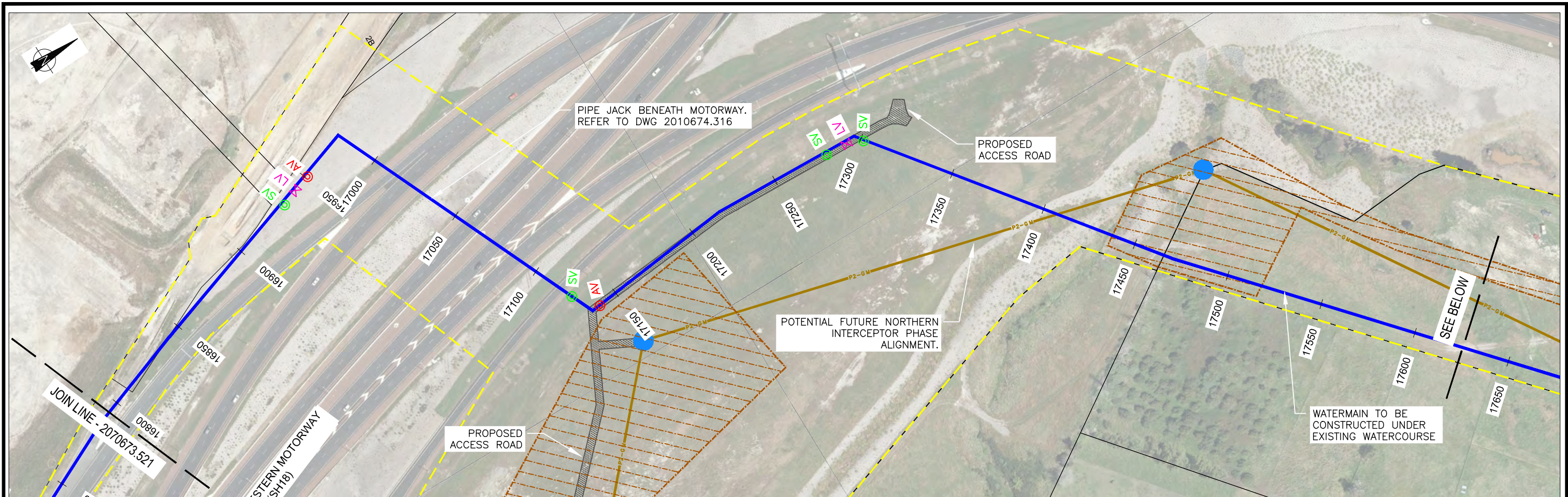
COPYRIGHT - This drawing, the design concept, remain the exclusive property of Watercare Services Limited and may not be used without approval. Copyright reserved.

**NORTH HARBOUR No.2 WATERMAIN AND NORTHERN INTERCEPTOR SHARED CORRIDOR - GENERAL ROUTE PLAN**

CAD FILE	2010673.521-525	DATE	22.02.16
ORIGINAL SCALE	A3 1:2,000	CONTRACT No.	5663
REF No.	WMNH2-91-G-521	ISSUE	-
DWG No.	2010673.521		2

Plot Date: May 06, 2016 - 1:15pm U:\loba\20173000\01\_DWG\_Current\08\_AE\Main\_Route\_AE\Drawing Set\2010673.521-525.dwg





**PROPOSED SERVICES**

	NH2 WATERMAIN AND CHAINAGE
	PROPOSED DESIGNATION BOUNDARY
	PERMANENT ACCESSWAY
	LINE VALVE
	AIR VALVE
	SCOUR VALVE
	CATHODIC PROTECTION
	INDICATIVE NI SURFACE CONSTRUCTION AREA AND/OR ACCESS
	INDICATIVE NI SHAFT LOCATION
	NI PHASE 1
	NI FUTURE PHASES

EXISTING FEATURES:  
REFER DWG 2010673.415

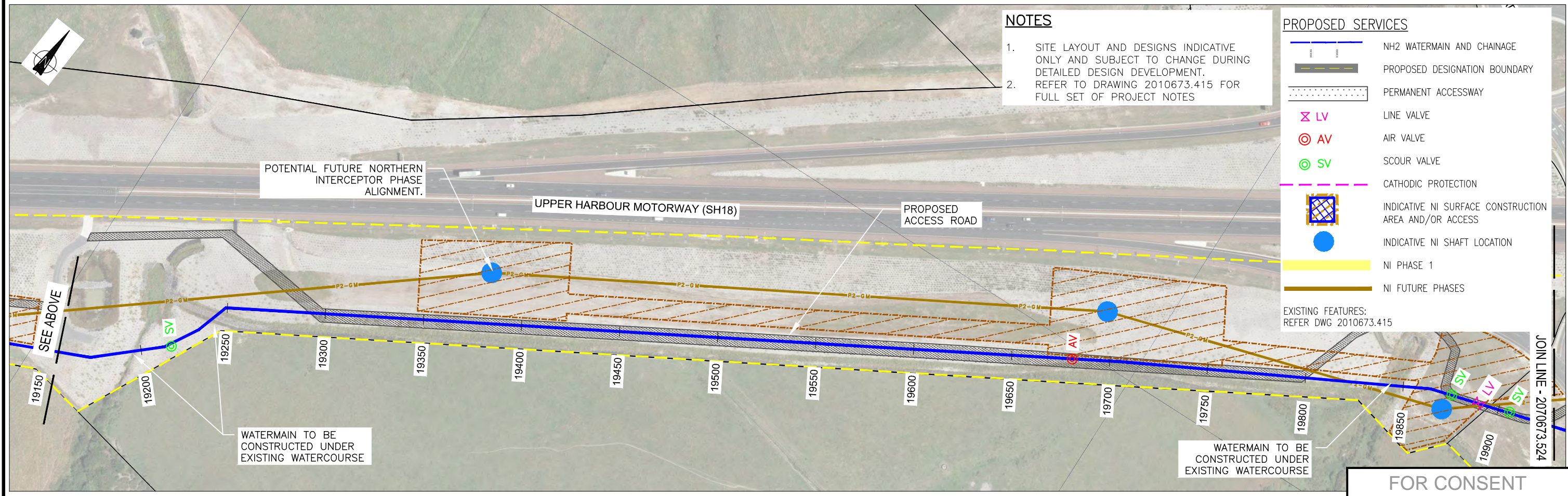
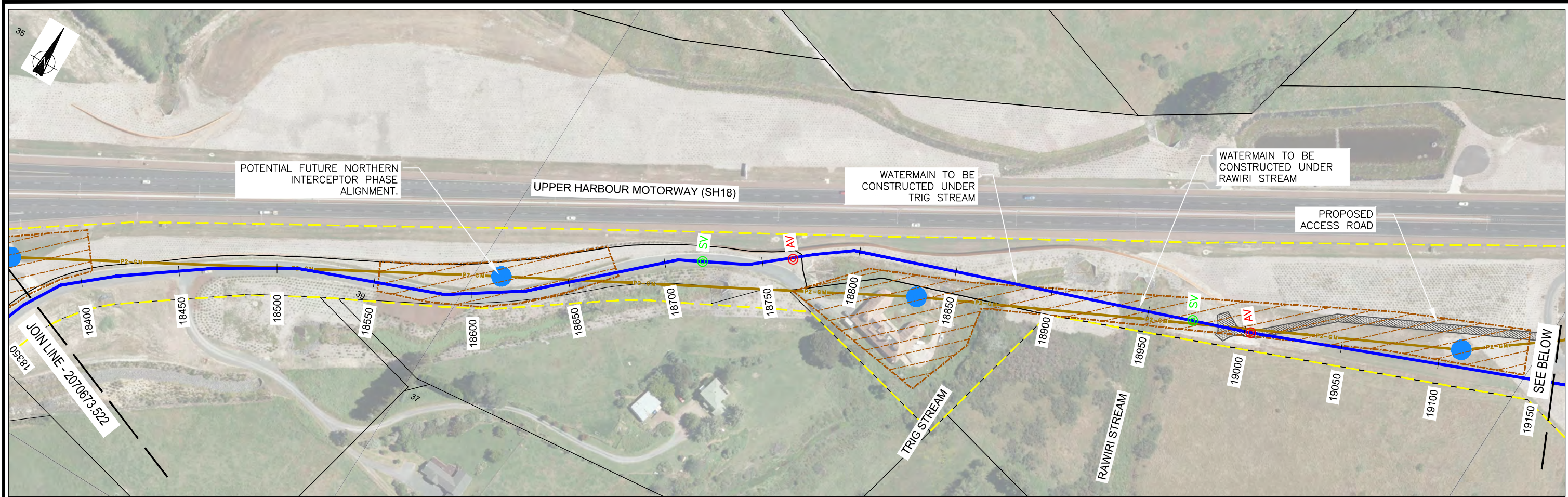
- NOTES**
- SITE LAYOUT AND DESIGNS INDICATIVE ONLY AND SUBJECT TO CHANGE DURING DETAILED DESIGN DEVELOPMENT.
  - REFER TO DRAWING 2010673.415 FOR FULL SET OF PROJECT NOTES

FOR CONSENT

DESIGNED		N.H.	12.15	<p><b>Watercare</b></p> <p>COPYRIGHT - This drawing, the design concept, remain the exclusive property of Watercare Services Limited and may not be used without approval. Copyright reserved.</p>	<p><b>NORTH HARBOUR No.2 WATERMAIN AND NORTHERN INTERCEPTOR</b></p> <p><b>SHARED CORRIDOR - GENERAL</b></p> <p><b>ROUTE PLAN</b></p>	CAD FILE	2010673.521-525	DATE	22.02.16	
DES. CHECKED		M.A.E.	12.15			OPERATIONS	ORIGINAL SCALE	A3	CONTRACT No.	5663
DRAWN		W.O.	12.15			INFRASTRUCTURE	REF No.	WMNH2-91-G-522	ISSUE	-
DWG. CHECKED		N.H.	12.15				DWG No.	2010673.522	ISSUE	2
PROJECT LEADER		M.A.E.	12.15							
INFRASTR APP'D										
ISSUE	DATE	AMENDMENT	BY	APPD.						
2	22.02.16	ISSUED FOR CONSENT - UPDATED WITH WSL COMMENTS	W.O.	M.A.E.						
1	03.12.15	ISSUED FOR CONSENT	W.O.	M.A.E.						

Plot Date: May 06, 2016 - 1:19pm U:\Jobs\2010673\001\_01\_DWG\_Current\08\_AEE\Main Route AEE Drawing Set\ 2010673.521-525.dwg





- NOTES**
1. SITE LAYOUT AND DESIGNS INDICATIVE ONLY AND SUBJECT TO CHANGE DURING DETAILED DESIGN DEVELOPMENT.
  2. REFER TO DRAWING 2010673.415 FOR FULL SET OF PROJECT NOTES

**PROPOSED SERVICES**

- NH2 WATERMAIN AND CHAINAGE
- PROPOSED DESIGNATION BOUNDARY
- PERMANENT ACCESSWAY
- LV LINE VALVE
- AV AIR VALVE
- SV SCOUR VALVE
- CATHODIC PROTECTION
- INDICATIVE NI SURFACE CONSTRUCTION AREA AND/OR ACCESS
- INDICATIVE NI SHAFT LOCATION
- NI PHASE 1
- NI FUTURE PHASES

EXISTING FEATURES:  
REFER DWG 2010673.415

**FOR CONSENT**

ISSUE	DATE	AMENDMENT	BY	APPD.
2	22.02.16	ISSUED FOR CONSENT - UPDATED WITH WSL COMMENTS	W.O.	M.A.E.
1	03.12.15	ISSUED FOR CONSENT	W.O.	M.A.E.

DESIGNED	N.H.	12.15
DES. CHECKED	M.A.E.	12.15
DRAWN	W.O.	12.15
DWG. CHECKED	N.H.	12.15
PROJECT LEADER	M.A.E.	12.15
INFRASTR. APP'D		

OPERATIONS
INFRASTRUCTURE

**Watercare**

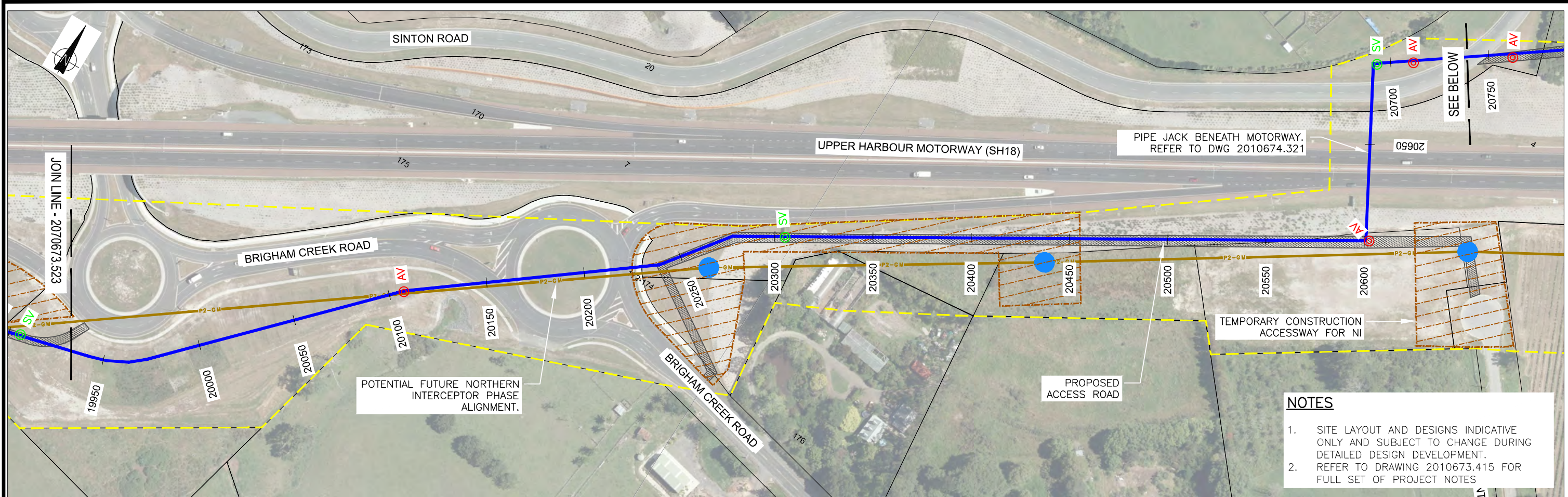
COPYRIGHT - This drawing, the design concept, remain the exclusive property of Watercare Services Limited and may not be used without approval. Copyright reserved.

**NORTH HARBOUR No.2 WATERMAIN AND NORTHERN INTERCEPTOR  
SHARED CORRIDOR - GENERAL  
ROUTE PLAN**

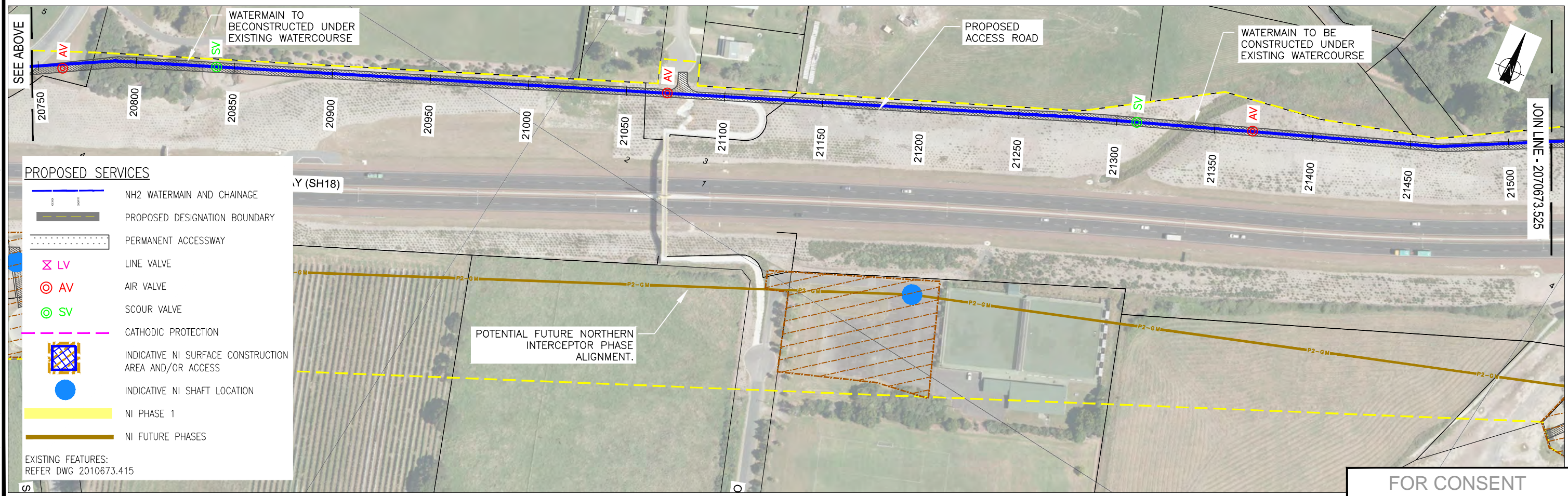
CAD FILE	2010673.521-525	DATE	22.02.16
ORIGINAL SCALE	A3	CONTRACT No.	5663
1:2,000			
REF No.	WMNH2-91-G-523	ISSUE	-
DWG No.	2010673.523		2

Plot Date: May 06, 2016 - 1:19pm U:\loba\2013\2006\01\_DWG\_Current\08\_AEE\Main Route AEE Drawing Set\ 2010673.521-525.dwg





- NOTES**
1. SITE LAYOUT AND DESIGNS INDICATIVE ONLY AND SUBJECT TO CHANGE DURING DETAILED DESIGN DEVELOPMENT.
  2. REFER TO DRAWING 2010673.415 FOR FULL SET OF PROJECT NOTES



- PROPOSED SERVICES**
- NH2 WATERMAIN AND CHAINAGE
  - PROPOSED DESIGNATION BOUNDARY
  - PERMANENT ACCESSWAY
  - LV LINE VALVE
  - AV AIR VALVE
  - SV SCOUR VALVE
  - CATHODIC PROTECTION
  - INDICATIVE NI SURFACE CONSTRUCTION AREA AND/OR ACCESS
  - INDICATIVE NI SHAFT LOCATION
  - NI PHASE 1
  - NI FUTURE PHASES
- EXISTING FEATURES:**  
REFER DWG 2010673.415

**FOR CONSENT**

ISSUE	DATE	AMENDMENT	BY	APPD.
2	22.02.16	ISSUED FOR CONSENT - UPDATED WITH WSL COMMENTS	W.O.	M.A.E.
1	03.12.15	ISSUED FOR CONSENT	W.O.	M.A.E.

DESIGNED	N.H.	12.15
DES. CHECKED	M.A.E.	12.15
DRAWN	W.O.	12.15
DWG. CHECKED	N.H.	12.15
PROJECT LEADER	M.A.E.	12.15
INFRASTR APP'D		

OPERATIONS
INFRASTRUCTURE

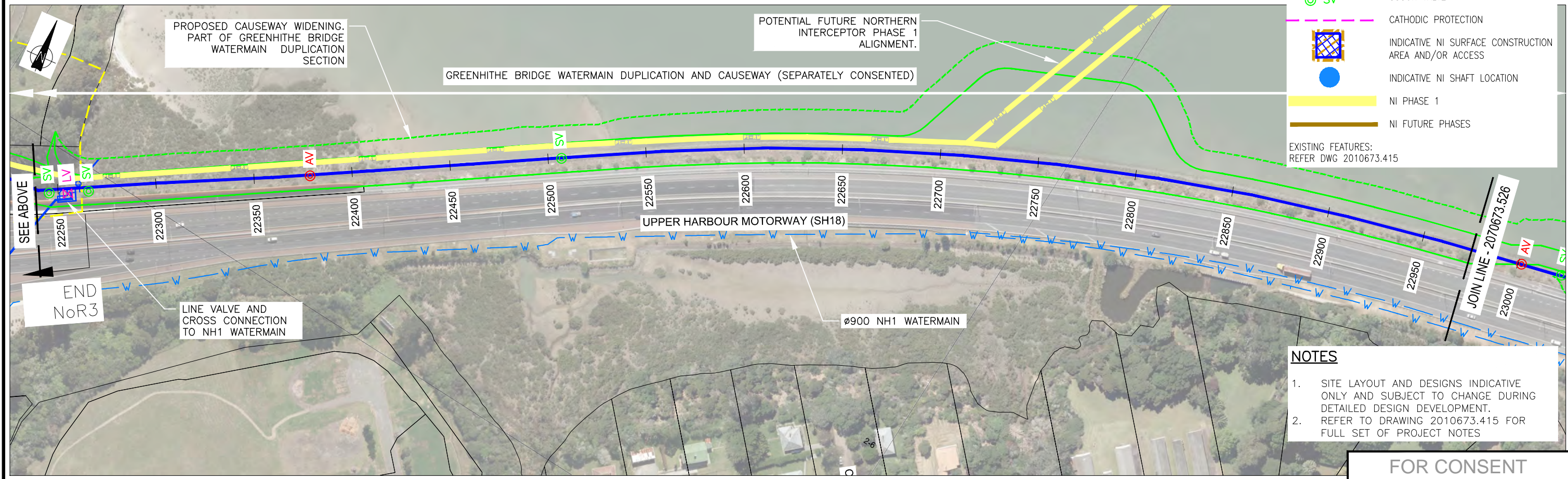
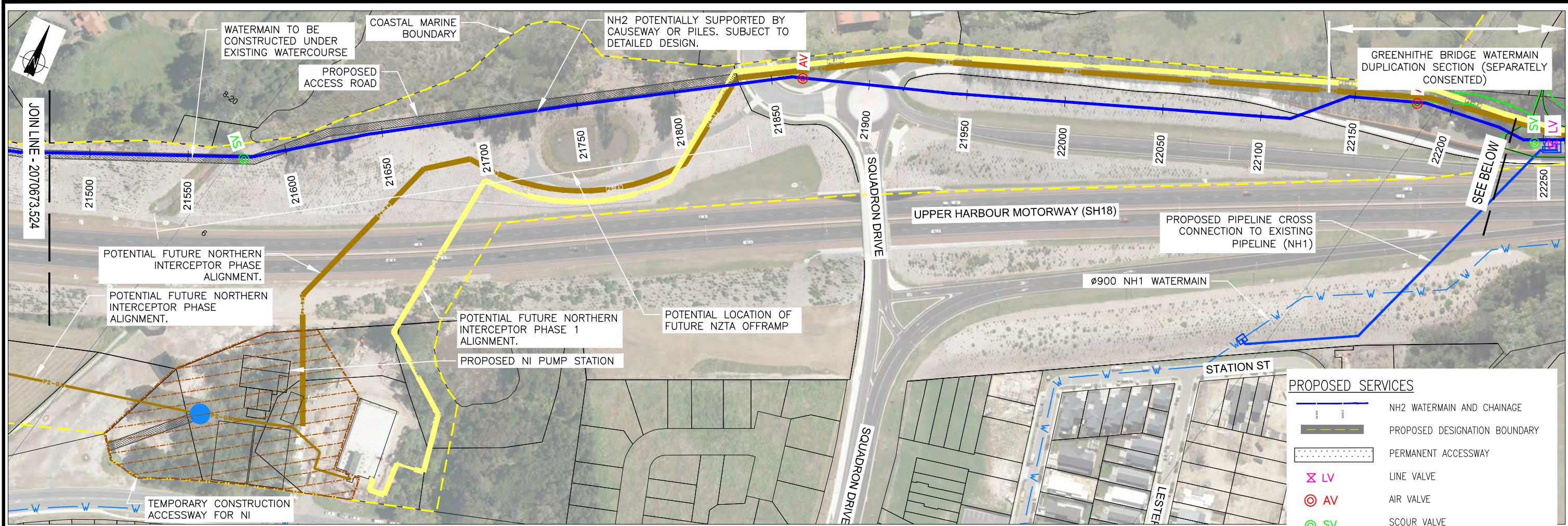
**Watercare**  
COPYRIGHT - This drawing, the design concept, remain the exclusive property of Watercare Services Limited and may not be used without approval. Copyright reserved.

**NORTH HARBOUR No.2 WATERMAIN AND NORTHERN INTERCEPTOR  
SHARED CORRIDOR - GENERAL  
ROUTE PLAN**

CAD FILE	2010673.521-525	DATE	22.02.16
ORIGINAL SCALE	A3 1:2,000	CONTRACT No.	5663
REF No.	WMNH2-91-G-524	ISSUE	-
DWG No.	2010673.524		2

Plot Date: May 06, 2016 1:20pm U:\Jobs\2010673\001\_DWG\_Current\08\_AEF\_Main\_Route\_AEF\_Drawing\_Set\2010673.521-525.dwg





**PROPOSED SERVICES**

- NH2 WATERMAIN AND CHAINAGE
- PROPOSED DESIGNATION BOUNDARY
- PERMANENT ACCESSWAY
- LINE VALVE
- AIR VALVE
- SCOUR VALVE
- CATHODIC PROTECTION
- INDICATIVE NI SURFACE CONSTRUCTION AREA AND/OR ACCESS
- INDICATIVE NI SHAFT LOCATION
- NI PHASE 1
- NI FUTURE PHASES

EXISTING FEATURES:  
REFER DWG 2010673.415

**NOTES**

- SITE LAYOUT AND DESIGNS INDICATIVE ONLY AND SUBJECT TO CHANGE DURING DETAILED DESIGN DEVELOPMENT.
- REFER TO DRAWING 2010673.415 FOR FULL SET OF PROJECT NOTES

**FOR CONSENT**

ISSUE	DATE	AMENDMENT	BY	APPD.
2	22.02.16	ISSUED FOR CONSENT - UPDATED WITH WSL COMMENTS	W.O.	M.A.E.
1	03.12.15	ISSUED FOR CONSENT	W.O.	M.A.E.

DESIGNED	N.H.	12.15
DES. CHECKED	M.A.E.	12.15
DRAWN	W.O.	12.15
DWG. CHECKED	N.H.	12.15
PROJECT LEADER	M.A.E.	12.15
INFRASTR APP'D		

OPERATIONS
INFRASTRUCTURE

**Watercare**  
COPYRIGHT - This drawing, the design concept, remain the exclusive property of Watercare Services Limited and may not be used without approval. Copyright reserved.

**NORTH HARBOUR No.2 WATERMAIN AND NORTHERN INTERCEPTOR  
SHARED CORRIDOR - GENERAL  
ROUTE PLAN**

CAD FILE	2010673.521-525	DATE	22.02.16
ORIGINAL SCALE	A3 1:2,000	CONTRACT No.	5663
REF No.	WMNH2-91-G-525	ISSUE	-
DWG No.	2010673.525		2

Plot Date: May 06, 2016 - 1:23pm U:\loba\2010673\001\01\_DWG\_Current\08\_AEF\Main Route AEF Drawing Set\2010673.521-525.dwg